

Tiger Prawn Rolls

Stage 1

How to make a DIY

New England hotdog pan



Tiger Prawn Rolls

Stage 1

How to make a DIY

New England hotdog pan



Step 1:

Cut out a sheet of heavy duty aluminium foil, measuring 8 by 16 inches. Lay it on your counter, matte-side up.

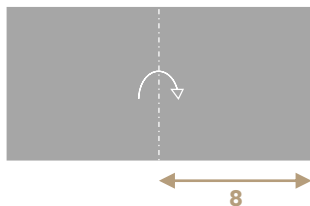


Tiger Prawn Rolls

Stage 1

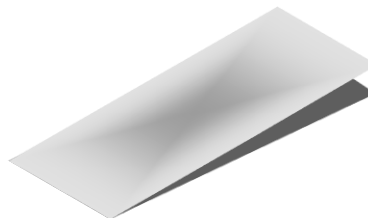
How to make a DIY

New England hotdog pan



Step 2:

Do a mountain fold; fold the sheet in half, under and away from you.

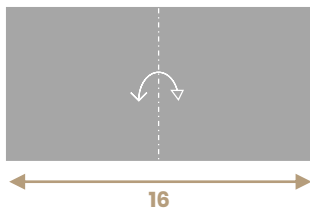


Tiger Prawn Rolls

Stage 1

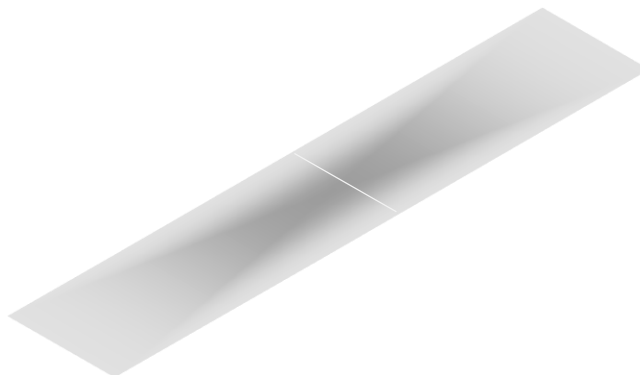
How to make a DIY

New England hotdog pan



Step 3:

Now open up the mountain fold, and lay the sheet flat on your surface.

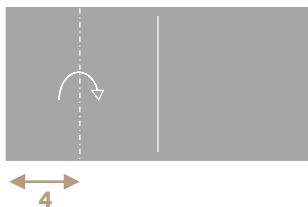


Tiger Prawn Rolls

Stage 1

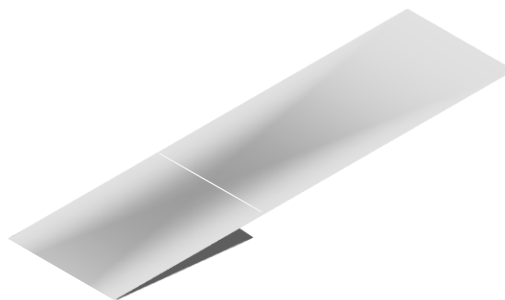
How to make a DIY

New England hotdog pan



Step 4:

Do a mountain fold; fold the left half of the sheet in half, under and away from you, to make a quarter fold.

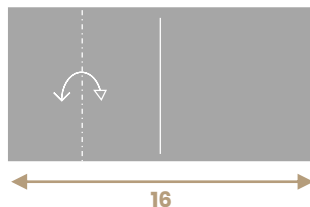


Tiger Prawn Rolls

Stage 1

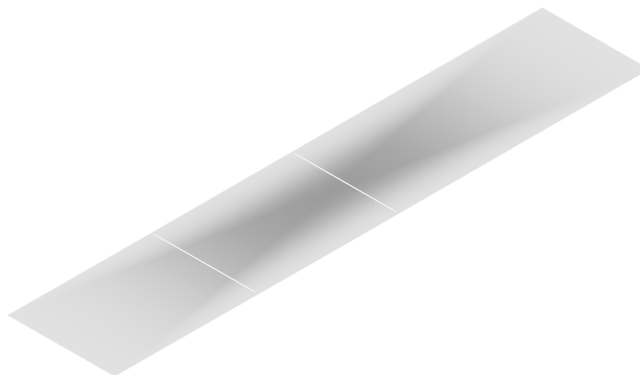
How to make a DIY

New England hotdog pan



Step 5:

Now open up the mountain fold, and lay the sheet flat on your surface.

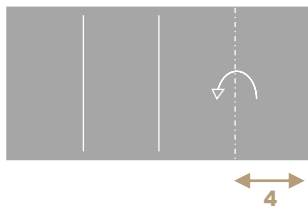


Tiger Prawn Rolls

Stage 1

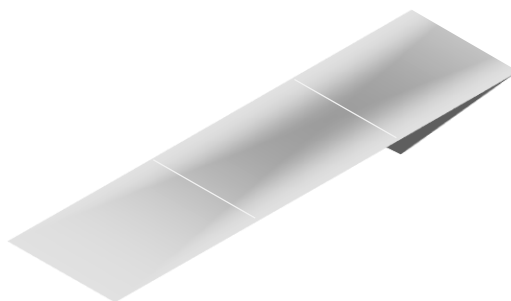
How to make a DIY

New England hotdog pan



Step 6:

Do a mountain fold; fold the right half of the sheet in half, under and towards you, to make a quarter fold.

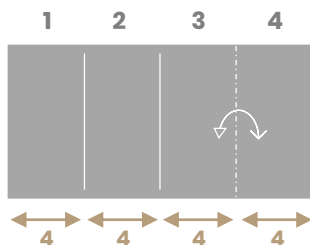


Tiger Prawn Rolls

Stage 1

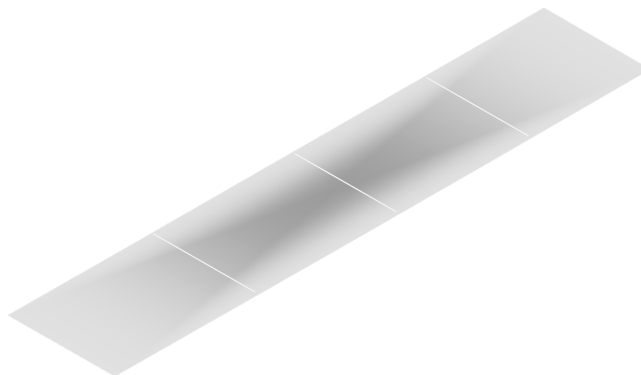
How to make a DIY

New England hotdog pan



Step 7:

Now open up the mountain fold, and lay the sheet flat on your surface. Each opened-up section should be 4 inches wide.

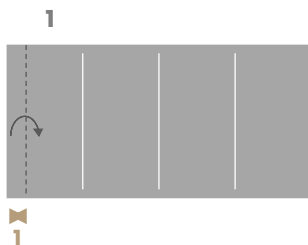


Tiger Prawn Rolls

Stage 1

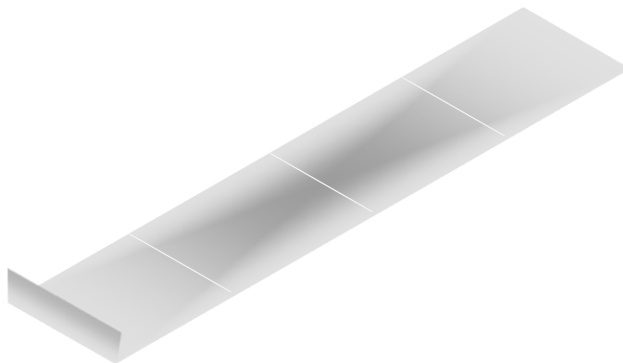
How to make a DIY

New England hotdog pan



Step 8:

Make a valley fold in the first 4-inch section; measure 1 inch from the left and fold upwards and over.



Tiger Prawn Rolls

Stage 1

How to make a DIY

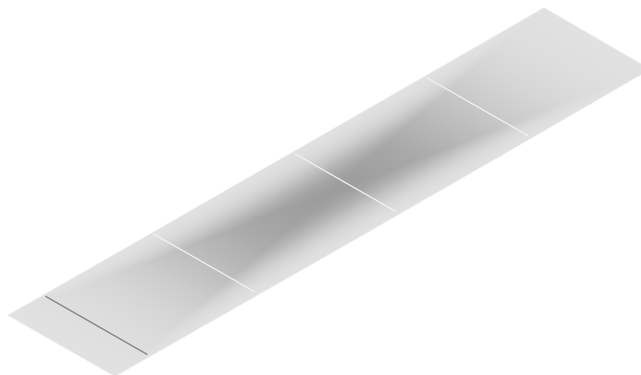
New England hotdog pan

1



Step 9:

Now open up the valley fold and lay the sheet flat on your surface.

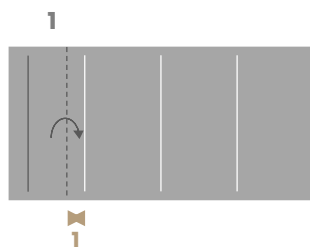


Tiger Prawn Rolls

Stage 1

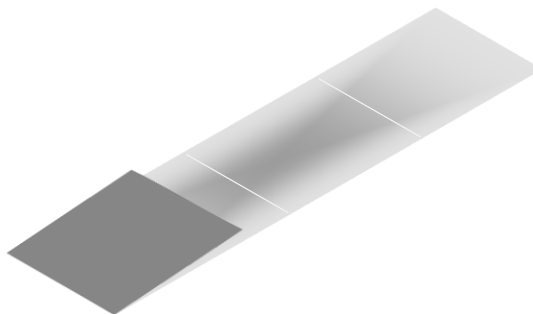
How to make a DIY

New England hotdog pan



Step 10:

Make a second valley fold in the first 4-inch section, leaving 1 inch on the right side.



Tiger Prawn Rolls

Stage 1

How to make a DIY

New England hotdog pan

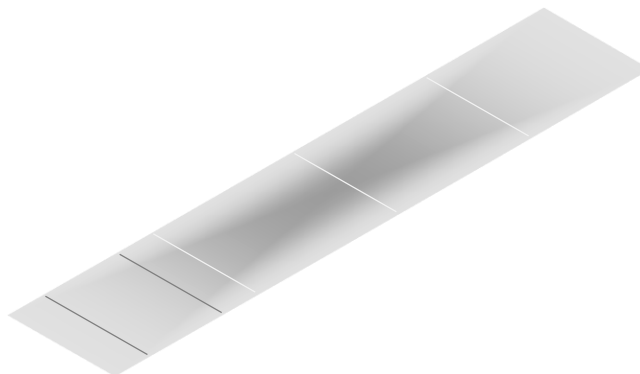
1



1 : 2 : 1

Step 11:

Now open up the valley fold and lay the sheet flat on your surface. Your first section should now have 2 valley folds.

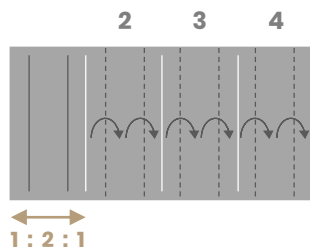


Tiger Prawn Rolls

Stage 1

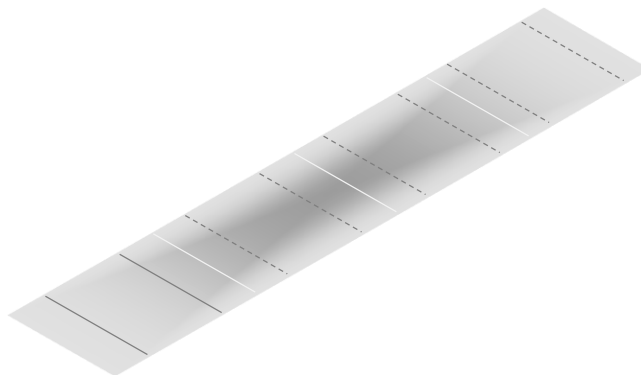
How to make a DIY

New England hotdog pan



Step 12:

Make similar valley folds for sections 2, 3, and 4.

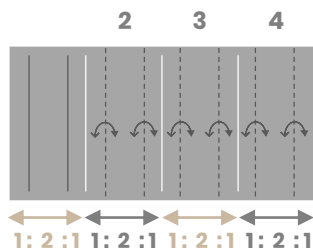


Tiger Prawn Rolls

Stage 1

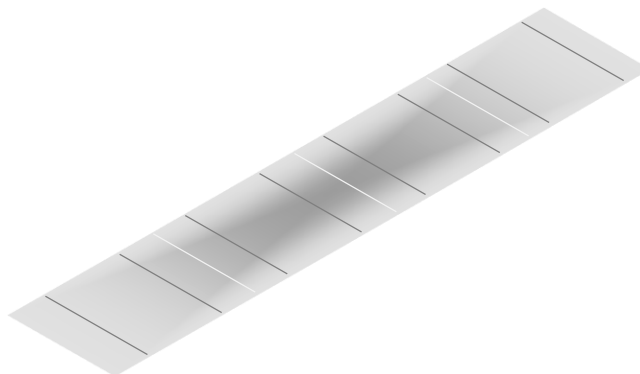
How to make a DIY

New England hotdog pan



Step 13:

Then open out the valley folds for sections 2, 3, and 4, and lay the sheet flat on your surface.

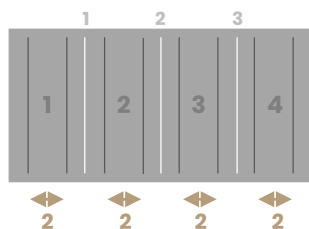


Tiger Prawn Rolls

Stage 1

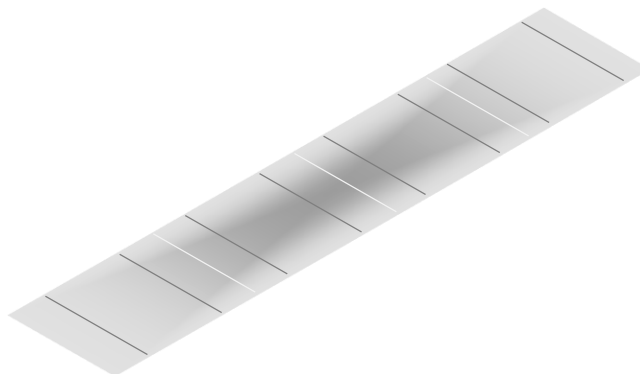
How to make a DIY

New England hotdog pan



Step 14:

Check; your unfolded sheet should have 3 mountain folds and 8 valley folds, with four 2-inch sections in the 'valleys'.

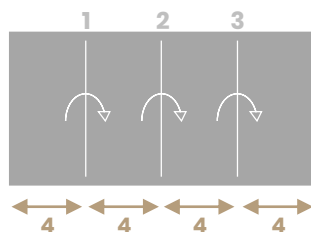


Tiger Prawn Rolls

Stage 1

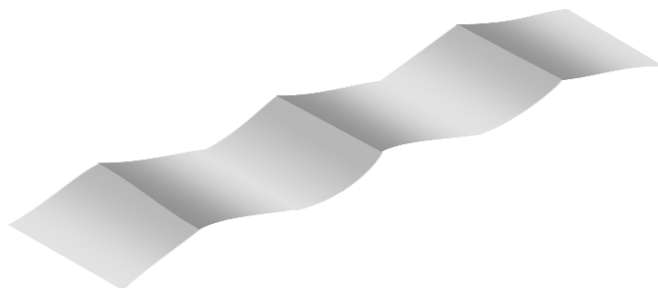
How to make a DIY

New England hotdog pan



Step 15

Ignore the valley folds for a moment. See these 3 mountain fold lines? Pinch them upwards to form 3 mountain ridges.

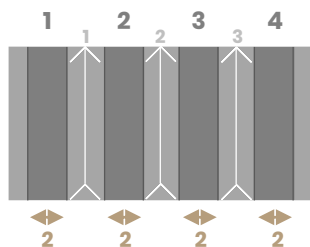


Tiger Prawn Rolls

Stage 1

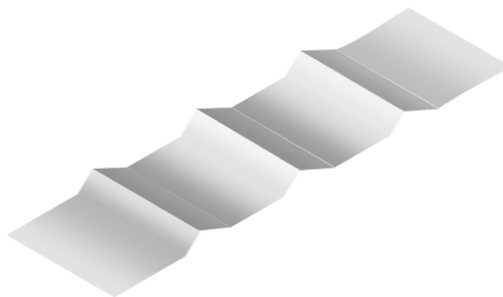
How to make a DIY

New England hotdog pan



Step 16

While keeping the 3 mountain ridges upright, push down between the valley folds to create four 2-inch valleys.

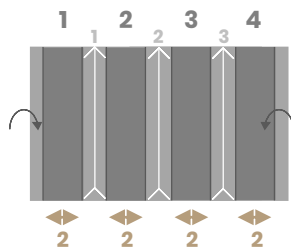


Tiger Prawn Rolls

Stage 1

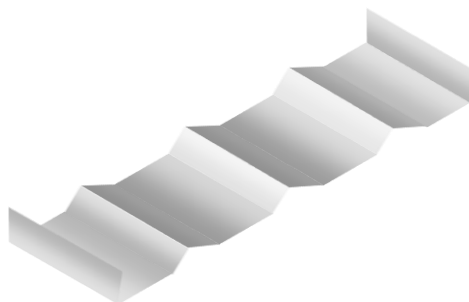
How to make a DIY

New England hotdog pan



Step 17

Continue keeping the mountain folds upright while forming your valleys. Also lift up the far left and far right valley-folds, so that they're standing upright.

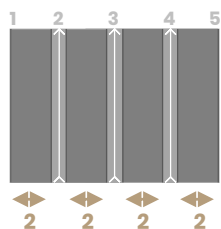


Tiger Prawn Rolls

Stage 1

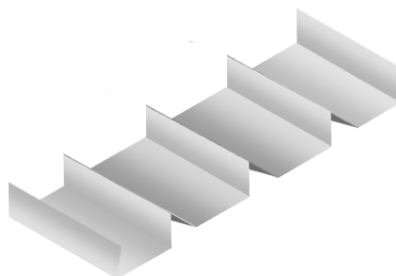
How to make a DIY

New England hotdog pan



Step 18

Pinch together each mountain ridge so that it's standing upright. Also ensure that the 2 outer folds are standing upright.

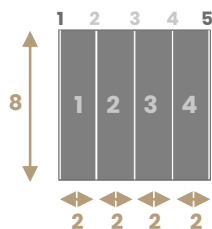


Tiger Prawn Rolls

Stage 1

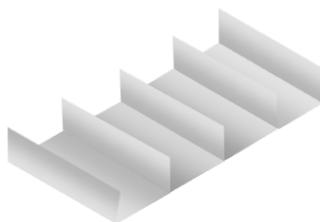
How to make a DIY

New England hotdog pan



Step 19

Check; at this point you will have 5 ridges – one on either side, and 3 in the middle. You will also have 4 valleys; each measuring 8x2 inches, with a total width of 8 inches.

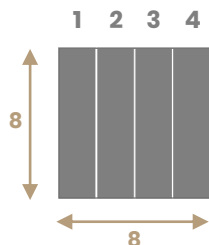


Tiger Prawn Rolls

Stage 1

How to make a DIY

New England hotdog pan



Step 20

You now have an 8x8 inch hotdog mould made out of aluminium foil. Place it inside your 8X8 brownie pan. Your New England hotdog pan is ready! Return to the recipe.

